

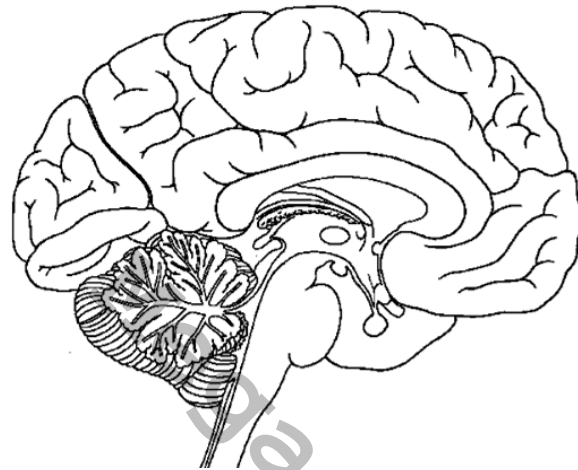
4.1

THE CENTRAL NERVOUS SYSTEM

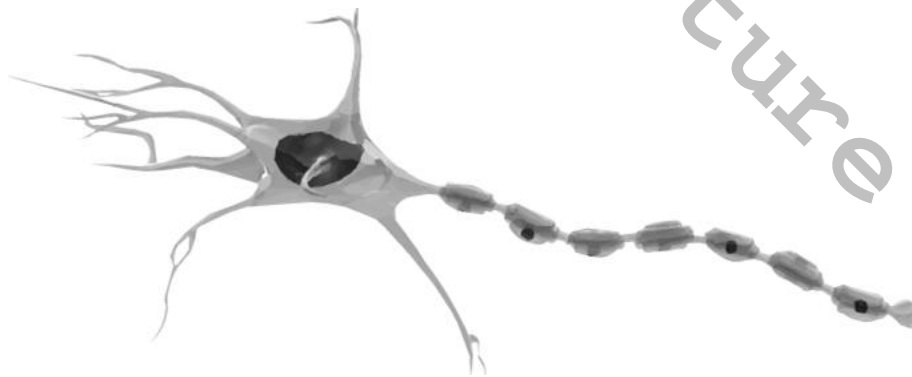
The role of the CNS and its effect on human behaviour

The central nervous system consists of the brain and the spinal cord. The brain is split into two sides: the right hemisphere and the left hemisphere.

- 1 The diagram below shows a side view of the brain. Shade it to show the different parts and label them



- 2 Neurones are cells which can transmit and receive messages. Label the following neurone



- 3 Delete the following words from the choices as appropriate to correctly explain how neurones work

An electrical impulse is generated at the (axon head/axon terminal) and travels along the axon. At the axon (head/terminal) it triggers the channel proteins in the membrane to (open/close) allowing (calcium/sodium) ions into the cell. These ions bind with the vesicles carrying neurotransmitters. The vesicles move towards the membrane and (fuse/diffuse) causing the contents to be released into the synaptic cleft. They diffuse across the gap and bind with the receptors on the (presynaptic/postsynaptic) neurone, triggering a response

[youtube.com/c/MegaLecture/](https://www.youtube.com/c/MegaLecture/)

+92 336 7801123
aspsychology101.wordpress.com