

Q1.

- 5 (a) Explain, in terms of heating effect, what is meant by the *root-mean-square (r.m.s.) value* of an alternating current.

.....  
.....  
..... [2]

- (b) State the relation between the peak current  $I_0$  and the r.m.s. current  $I_{\text{rms}}$  of a sinusoidally-varying current.

..... [1]

- (c) The value of a direct current and the peak value of a sinusoidal alternating current are equal.

- (i) Determine the ratio

$$\frac{\text{power dissipation in a resistor of resistance } R \text{ by the direct current}}{\text{power dissipation in the resistor of resistance } R \text{ by the alternating current}}$$

ratio = ..... [2]

- (ii) State one advantage and one disadvantage of the use of alternating rather than direct current in the home.

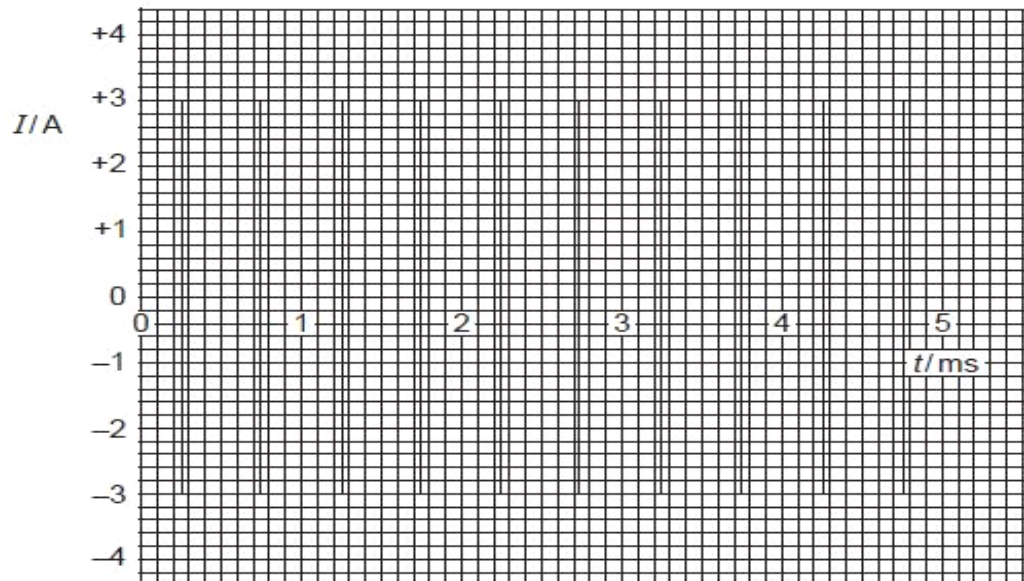
advantage .....

.....

disadvantage .....

..... [2]

(d) A current  $I$  varies with time  $t$  as shown in Fig. 5.1.



**Fig. 5.1**

For this varying current, state

(i) the peak value,

peak value = ..... A [1]

(ii) the r.m.s. value.

r.m.s. value = ..... A [1]

**Q2.**

- 4 An ideal transformer has 5000 turns on its primary coil. It is to be used to convert a mains supply of 230V r.m.s. to an alternating voltage having a peak value of 9.0V.

(a) Calculate the number of turns on the secondary coil.

number = ..... [3]

- (b) The output from the transformer is to be full-wave rectified. Fig. 4.1 shows part of the rectifier circuit.

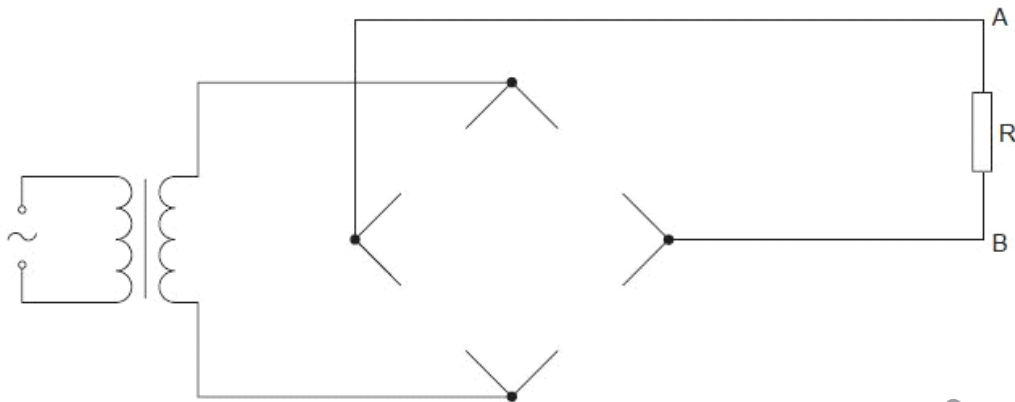


Fig. 4.1

On Fig. 4.1, draw

- diode symbols to complete the diagram of the rectifier such that terminal A of the resistor R is positive with respect to terminal B, [2]
- the symbol for a capacitor connected to provide smoothing of the potential difference across the resistor R. [1]

- (c) Fig. 4.2 shows the variation with time  $t$  of the smoothed potential difference  $V$  across the resistor R.

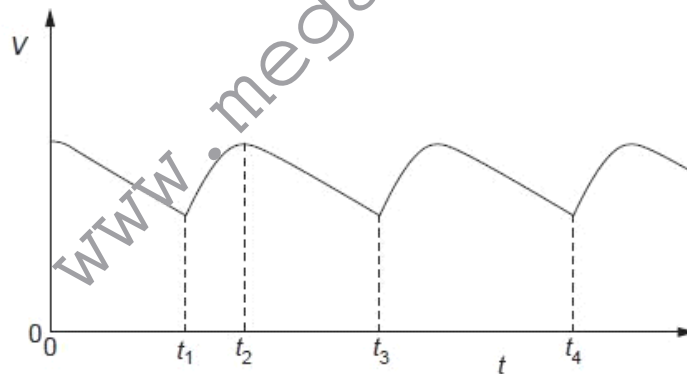


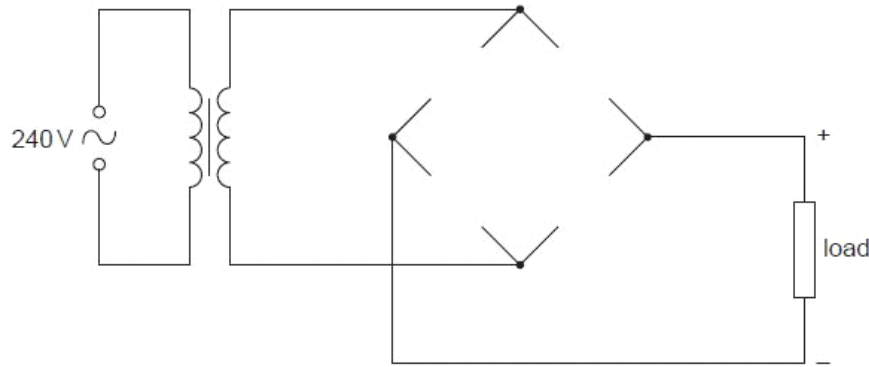
Fig. 4.2

- State the interval of time during which the capacitor is being charged from the transformer.  
from time ..... to time ..... [1]
- The resistance of the resistor R is doubled. On Fig. 4.2, sketch the variation with time  $t$  of the potential difference  $V$  across the resistor. [2]

U<sub>0</sub>

**Q3.**

- 6 A student is asked to design a circuit by which a direct voltage of peak value 9.0V is obtained from a 240V alternating supply. The student uses a transformer that may be considered to be ideal and a bridge rectifier incorporating four ideal diodes. The partially completed circuit diagram is shown in Fig. 6.1.



**Fig. 6.1**

- (a) On Fig. 6.1, draw symbols for the four diodes so as to produce the polarity across the load as shown on the diagram. [2]

- (b) Calculate the ratio

$$\frac{\text{number of turns on the secondary coil}}{\text{number of turns on the primary coil}}$$

ratio = ..... [3]

**Q4.**

- 7 (a) Explain what is meant by the *root-mean-square* (r.m.s.) value of an alternating voltage.

For  
Examine  
Use

.....  
.....  
..... [2]

- (b) An alternating voltage  $V$  is represented by the equation

$$V = 220 \sin(120\pi t),$$

where  $V$  is measured in volts and  $t$  is in seconds.

For this alternating voltage, determine

- (i) the peak voltage,

peak voltage = ..... V [1]

- (ii) the r.m.s. voltage,

r.m.s. voltage = ..... V [1]

- (iii) the frequency.

frequency = ..... Hz [1]

- (c) The alternating voltage in (b) is applied across a resistor such that the mean power output from the resistor is 1.5 kW.

Calculate the resistance of the resistor.

resistance = .....  $\Omega$  [2]

Q5.

6 A transformer is illustrated in Fig. 6.1.

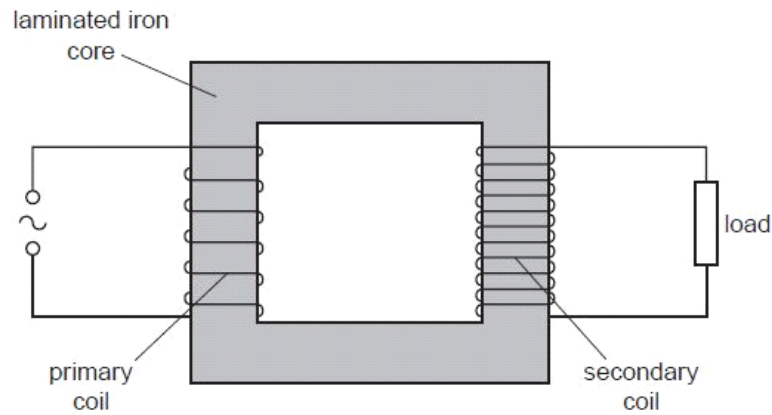


Fig. 6.1

(a) (i) Explain why the coils are wound on a core made of iron.

.....  
 .....[1]

(ii) Suggest why thermal energy is generated in the core.

.....  
 .....  
 .....[2]

(b) (i) State Faraday's law of electromagnetic induction.

.....  
 .....  
 .....[2]

(ii) Use Faraday's law to explain why the potential difference across the load and the e.m.f. of the supply are not in phase.

.....  
 .....  
 .....  
 .....[2]

- (c) Electrical energy is usually transmitted using alternating current. Suggest why the transmission is achieved using

*F*  
*Exar*  
*L*

- (i) high voltages,

.....  
.....  
.....[2]

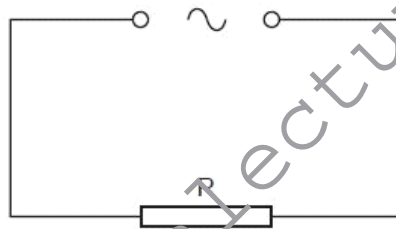
- (ii) alternating current.

.....  
.....[1]

**Q6.**

- 6 An alternating current supply is connected in series with a resistor  $R$ , as shown in Fig. 6.1.

*E*



**Fig. 6.1**

The variation with time  $t$  (measured in seconds) of the current  $I$  (measured in amps) in the resistor is given by the expression

$$I = 9.9 \sin(380t).$$



(a) For the current in the resistor R, determine

(i) the frequency,

frequency = ..... Hz [2]

(ii) the r.m.s. current.

r.m.s. current = ..... A [2]

(b) To prevent over-heating, the mean power dissipated in resistor R must not exceed 400W.  
Calculate the minimum resistance of R.

For  
Examin  
Use

resistance = .....  $\Omega$  [2]

**Q7.**



- 6 A sinusoidal alternating voltage supply is connected to a bridge rectifier consisting of four ideal diodes. The output of the rectifier is connected to a resistor  $R$  and a capacitor  $C$  as shown in Fig. 6.1.

For  
Examin  
Use

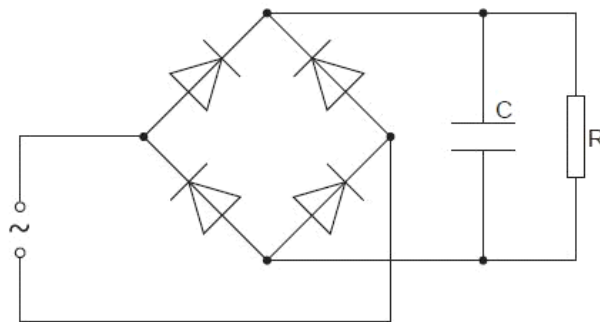
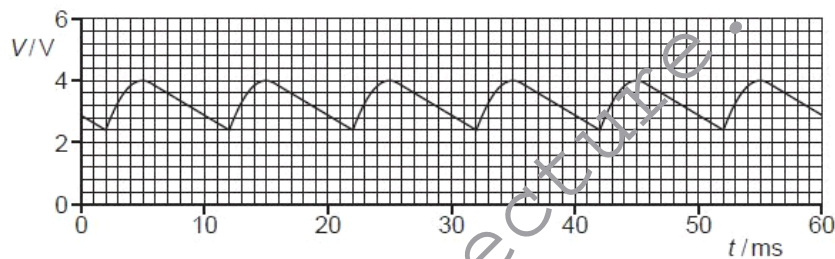


Fig. 6.1

The function of  $C$  is to provide some smoothing to the potential difference across  $R$ . The variation with time  $t$  of the potential difference  $V$  across the resistor  $R$  is shown in Fig. 6.2.



- (a) Use Fig. 6.2 to determine, for the alternating supply,

- (i) the peak voltage,

peak voltage = ..... V [1]

- (ii) the root-mean-square (r.m.s.) voltage,

r.m.s. voltage = ..... V [1]



(iii) the frequency. Show your working.

Ex

frequency = ..... Hz [2]

(b) The capacitor C has capacitance  $5.0\mu\text{F}$ .  
For a single discharge of the capacitor through the resistor R, use Fig. 6.2 to

(i) determine the change in potential difference,

change = ..... V [1]

(ii) determine the change in charge on each plate of the capacitor,

change = ..... C [2]

(iii) show that the average current in the resistor is  $1.1 \times 10^{-3}\text{A}$ .

[2]

- (c) Use Fig. 6.2 and the value of the current given in (b)(iii) to estimate the resistance of resistor R.

Ex

resistance = .....  $\Omega$  [2]

Q8.

- 6 A simple transformer is illustrated in Fig. 6.1.

Ex  
L

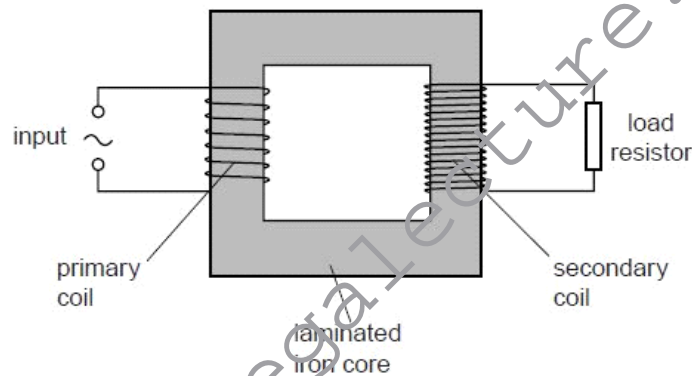


Fig. 6.1

(a) State

- (i) why the iron core is laminated,

.....  
 .....  
 ..... [2]

(ii) what is meant by an *ideal* transformer.

.....  
 ..... [1]

(b) An ideal transformer has 300 turns on the primary coil and 8100 turns on the secondary coil.

The root-mean-square input voltage to the primary coil is 9.0V.

Calculate the peak voltage across the load resistor connected to the secondary coil.

peak voltage = ..... V [2]

**Q9.**

6 (a) State Faraday's law of electromagnetic induction.

.....  
 .....  
 ..... [2]

(b) The output of an ideal transformer is connected to a bridge rectifier, as shown in Fig. 6.1.

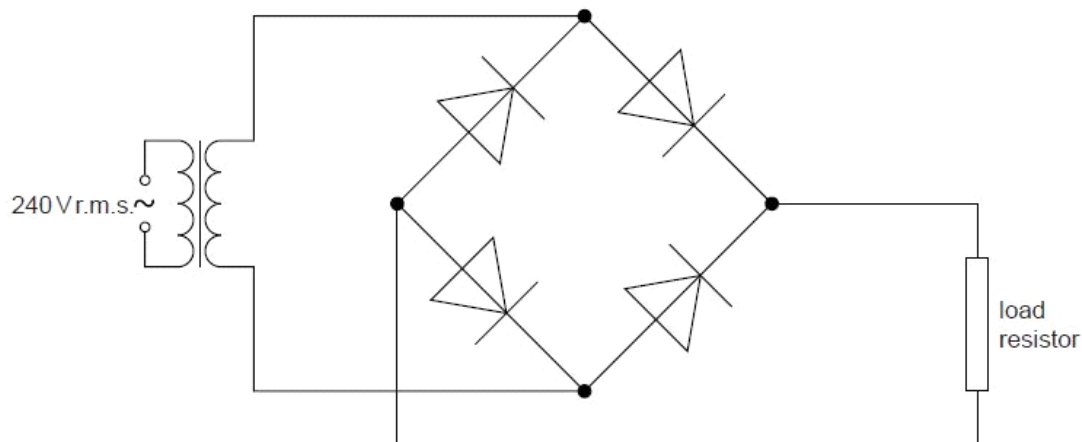


Fig. 6.1

For  
Examine  
Use

The input to the transformer is 240 V r.m.s. and the **maximum** potential difference across the load resistor is 9.0 V.

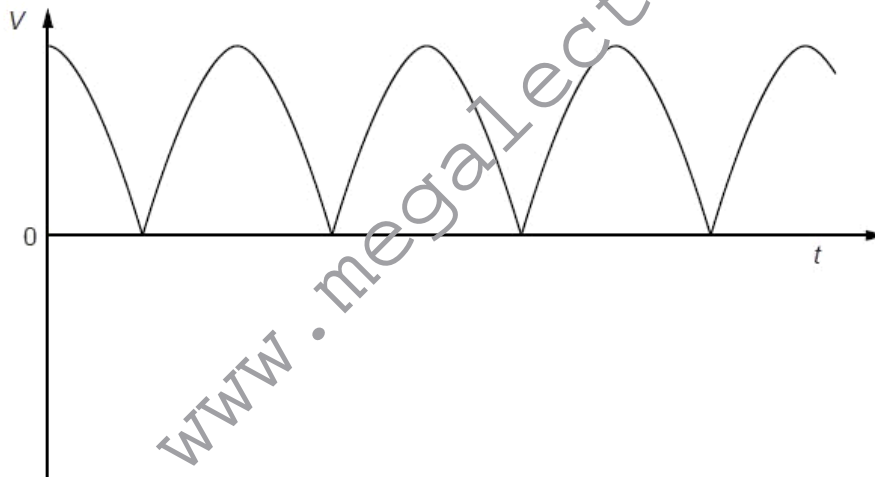
- (i) On Fig. 6.1, mark with the letter P the positive output from the rectifier. [1]  
 (ii) Calculate the ratio

$$\frac{\text{number of turns on primary coil}}{\text{number of turns on secondary coil}}$$

ratio = ..... [3]

- (c) The variation with time  $t$  of the potential difference  $V$  across the load resistor in (b) is shown in Fig. 6.2.

For  
Examine  
Use



**Fig. 6.2**

A capacitor is now connected in parallel with the load resistor to produce some smoothing.

- (i) Explain what is meant by *smoothing*.

.....  
 ..... [1]

- (ii) On Fig. 6.2, draw the variation with time  $t$  of the smoothed output potential difference. [2]

**Q10.**

- 4 The rectified output of a sinusoidal signal generator is connected across a resistor  $R$  of resistance  $1.5\text{ k}\Omega$ , as shown in Fig. 4.1.



Fig. 4.1

The variation with time  $t$  of the potential difference  $V$  across  $R$  is shown in Fig. 4.2.

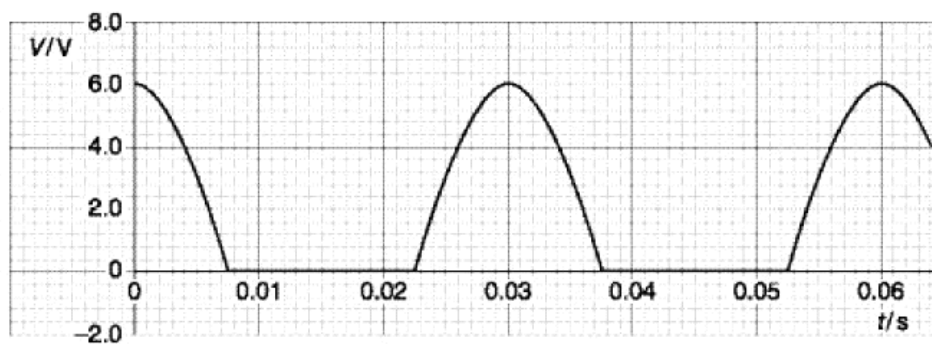


Fig. 4.2

- (a) State how the rectification shown in Fig. 4.2 may be achieved.

.....  
 ..... [2]

- (b) A capacitor is now connected in parallel with the resistor **R**. The resulting variation with time  $t$  of the potential difference  $V$  across **R** is shown in Fig. 4.3.

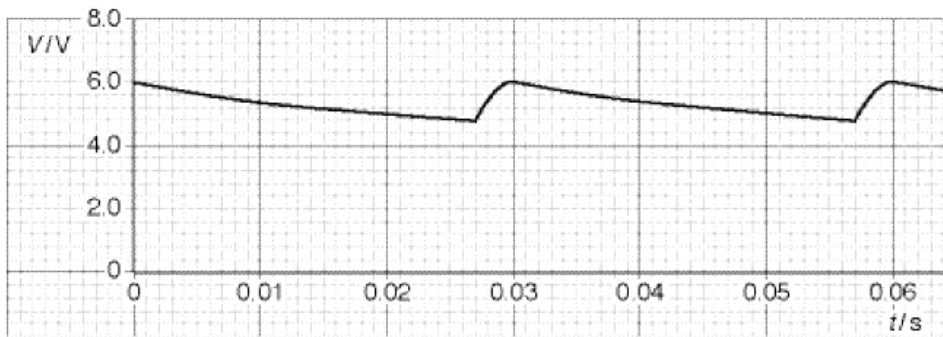


Fig. 4.3

- (i) Using Fig. 4.3, determine

1. the mean potential difference across the resistor **R**,

potential difference = ..... V

2. the mean current in the resistor,

mean current = ..... A

3. the time in each cycle during which the capacitor discharges through the resistor.

time = ..... s  
[4]





(ii) Using your answers in (i), calculate

USE

1. the charge passing through the resistor during one discharge of the capacitor,

charge = ..... C

2. the capacitance of the capacitor.

capacitance = ..... F  
[4]

(c) A second capacitor is now connected in parallel with the resistor **R** and the first capacitor. On Fig. 4.3, draw a line to show the variation with time  $t$  of the potential difference  $V$  across the resistor. [1]

**Q11.**

- 6 An alternating supply of frequency 50 Hz and having an output of 6.0 V r.m.s. is to be rectified so as to provide direct current for a resistor R. The circuit of Fig. 6.1 is used.

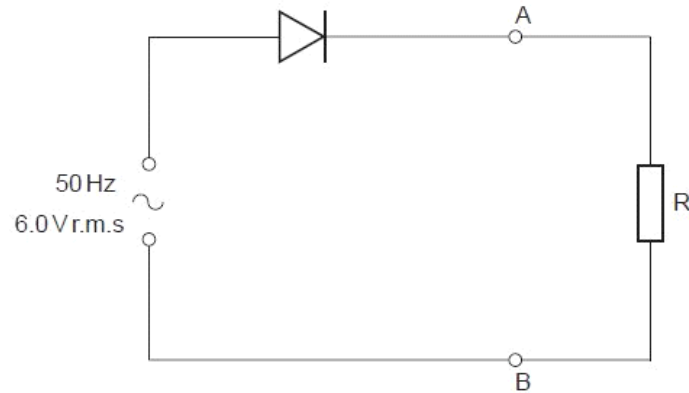


Fig. 6.1

The diode is ideal. The Y-plates of a cathode-ray oscilloscope (c.r.o.) are connected between points A and B.

- (a) (i) Calculate the maximum potential difference across the diode during one cycle.

potential difference = ..... V [2]

- (ii) State the potential difference across R when the diode has maximum potential difference across it. Give a reason for your answer.

.....  
 ..... [1]



- (b) The Y-plate sensitivity of the c.r.o. is set at  $2.0 \text{ V cm}^{-1}$  and the time-base at  $5.0 \text{ ms cm}^{-1}$ .

On Fig. 6.2, draw the waveform that is seen on the screen of the c.r.o.

[3]

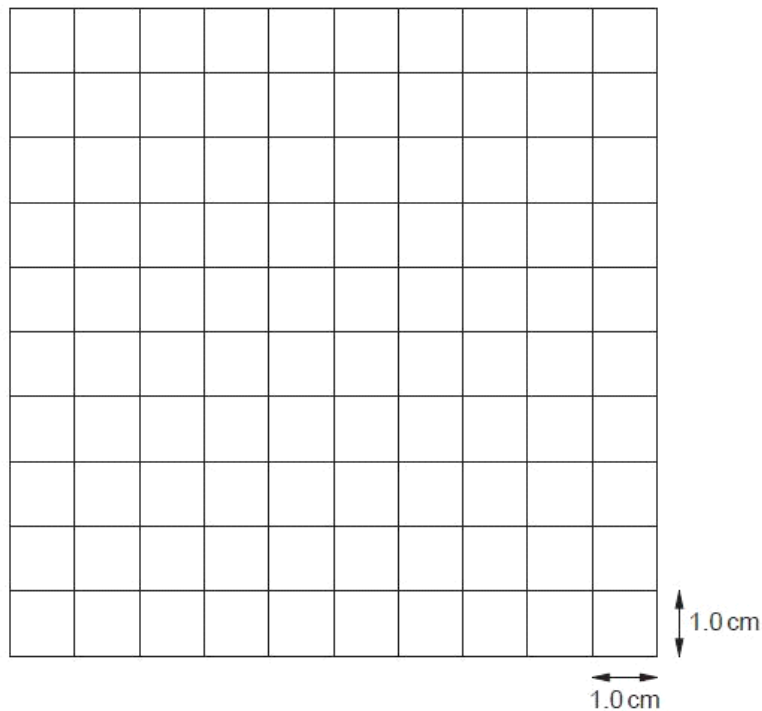


Fig. 6.2

- (c) A capacitor of capacitance  $180 \mu\text{F}$  is connected into the circuit to provide smoothing of the potential difference across the resistor R.

(i) On Fig. 6.1, show the position of the capacitor in the circuit.

[1]

(ii) Calculate the energy stored in the fully-charged capacitor.

energy = ..... J [3]

- (iii) During discharge, the potential difference across the capacitor falls to  $0.43 V_0$ , where  $V_0$  is the maximum potential difference across the capacitor.

Calculate the fraction of the total energy that remains in the capacitor after the discharge.

fraction = ..... [2]

## Q12.

- 6 A simple iron-cored transformer is illustrated in Fig. 6.1.

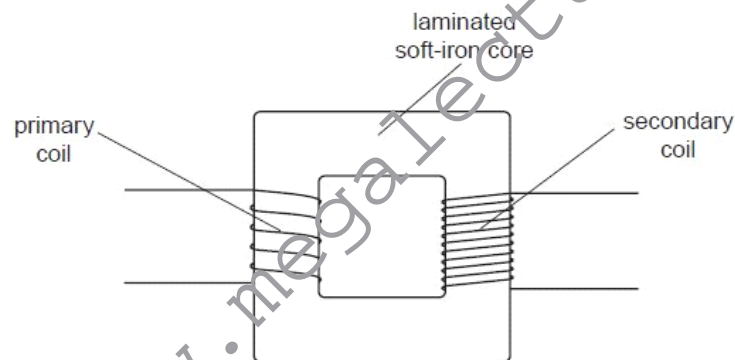


Fig. 6.1

- (a) Suggest why the core is

- (i) a continuous loop,

.....  
 ..... [1]

For  
Examiner's  
Use

(ii) laminated.

.....  
.....  
.....[2]

(b) (i) State Faraday's law of electromagnetic induction.

.....  
.....  
.....[2]

(ii) Use Faraday's law to explain the operation of the transformer.

.....  
.....  
.....  
.....[3]

(c) State two advantages of the use of alternating voltages for the transmission and use of electrical energy.

1. ....  
.....  
2. ....  
.....  
[2]

For  
Exami  
Us

**Q13.**

7 A sinusoidal alternating voltage is to be rectified.

(a) Suggest one advantage of full-wave rectification as compared with half-wave rectification.

For  
Examin  
Use

[1]

(b) The rectification is produced using the circuit of Fig. 7.1.

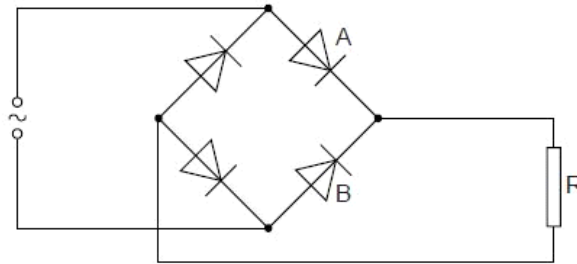


Fig. 7.1

All the diodes may be considered to be ideal.

The variation with time  $t$  of the alternating voltage applied to the circuit is shown in Fig. 7.2 and in Fig. 7.3.

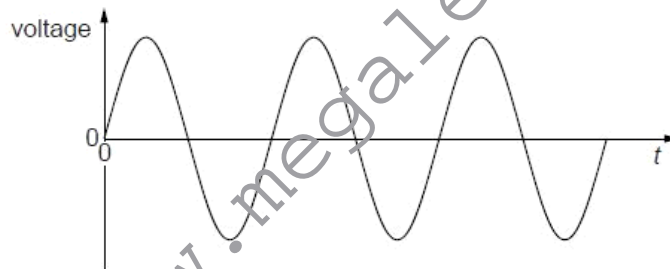


Fig. 7.2

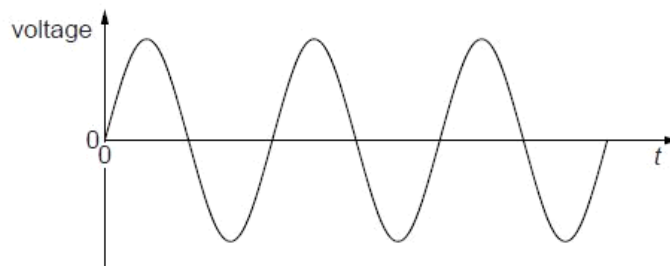


Fig. 7.3



- (i) On the axes of Fig. 7.2, draw a graph to show the variation with time  $t$  of the potential difference across diode A. [1] For Examiner's Use
- (ii) On the axes of Fig. 7.3, draw a graph to show the variation with time  $t$  of the potential difference across diode B. [1]
- (c) (i) On Fig. 7.1, draw the symbol for a capacitor, connected into the circuit so as to provide smoothing. [1]
- (ii) Fig. 7.4 shows the variation with time  $t$  of the smoothed potential difference across the resistor R in Fig. 7.1.

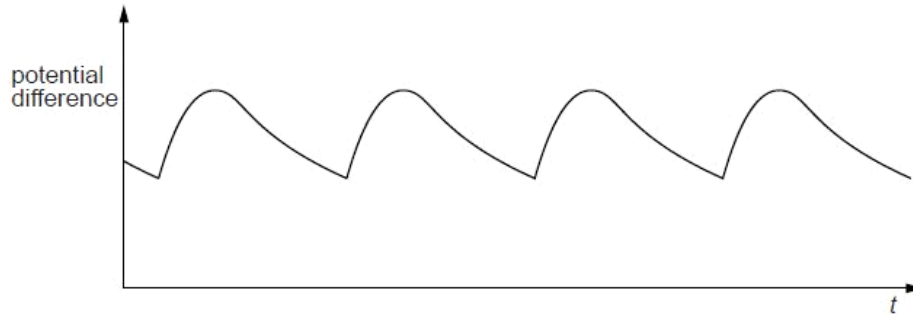


Fig. 7.4

1. State how the amount of smoothing may be increased.

.....

..... [1]

2. On Fig. 7.4, draw the variation with time  $t$  of the potential difference across resistor R for increased smoothing. [2]

Q14.



6 A simple iron-cored transformer is illustrated in Fig. 6.1.

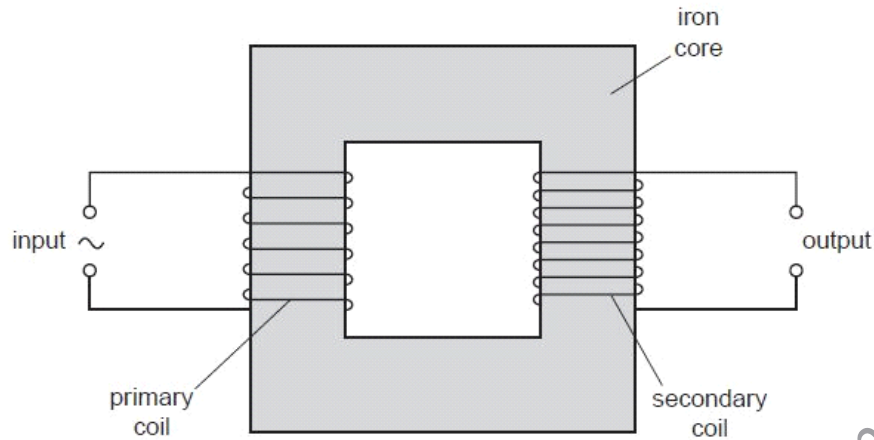


Fig. 6.1

(a) (i) State why the primary and secondary coils are wound on a core made of iron.

.....

.....

.....[1]

(ii) Suggest why thermal energy is generated in the core when the transformer is in use.

.....

.....

.....

.....[3]

- (b) The root-mean-square (r.m.s.) voltage and current in the primary coil are  $V_P$  and  $I_P$  respectively.

For  
Examiner:  
Use

The r.m.s. voltage and current in the secondary coil are  $V_S$  and  $I_S$  respectively.

- (i) Explain, by reference to direct current, what is meant by the *root-mean-square* value of an alternating current.

.....  
.....  
.....[2]

- (ii) Show that, for an ideal transformer,

$$\frac{V_S}{V_P} = \frac{I_P}{I_S}.$$

[2]

Q15.

- 6 The variation with time  $t$  of the current  $I$  in a resistor is shown in Fig. 6.1.

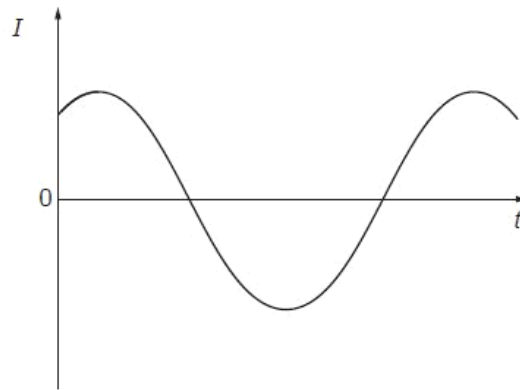


Fig. 6.1

The variation of the current with time is sinusoidal.

- (a) Explain why, although the current is not in one direction only, power is converted in the resistor.

.....

.....

..... [2]

- (b) Using the relation between root-mean-square (r.m.s.) current and peak current, deduce the value of the ratio

$$\frac{\text{average power converted in the resistor}}{\text{maximum power converted in the resistor}}$$

ratio = ..... [3]

Q16.

- 6 The variation with time  $t$  of the output  $V$  of an alternating voltage supply of frequency 50 Hz is shown in Fig. 6.1.

For  
Examine  
Use

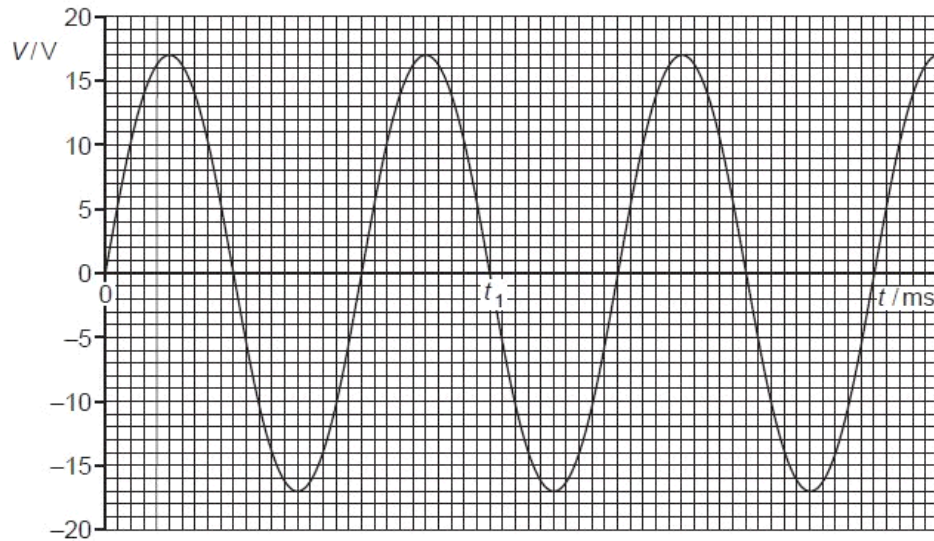


Fig. 6.1

- (a) Use Fig. 6.1 to state

- (i) the time  $t_1$ ,

$$t_1 = \dots\dots\dots \text{ s [2]}$$

- (ii) the peak value  $V_0$  of the voltage,

$$V_0 = \dots\dots\dots \text{ V [1]}$$

- (iii) the root-mean-square voltage  $V_{\text{rms}}$ ,

$$V_{\text{rms}} = \dots\dots\dots \text{ V [1]}$$

- (iv) the mean voltage  $\langle V \rangle$ .

$$\langle V \rangle = \dots\dots\dots \text{ V [1]}$$



- (b) The alternating supply is connected in series with a resistor of resistance  $2.4\Omega$ . Calculate the mean power dissipated in the resistor.

For  
Examiner's  
Use

power = ..... W [2]

**Q17.**

- 5 The components for a bridge rectifier are shown in Fig. 5.1.

For  
Examiner's  
Use

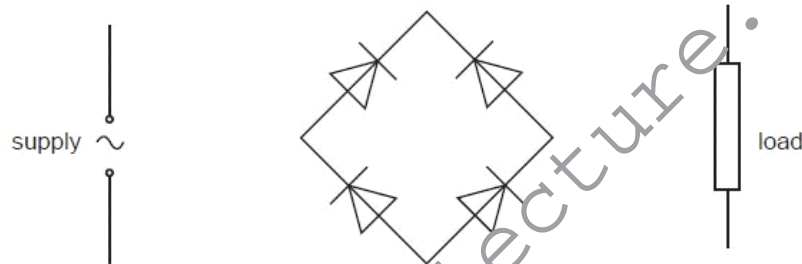


Fig. 5.1

- (a) Complete the circuit of Fig. 5.1 by showing the connections of the supply and of the load to the diodes. [2]
- (b) Suggest one advantage of the use of a bridge rectifier, rather than a single diode, for the rectification of alternating current.

..... [1]

- (c) State

- (i) what is meant by *smoothing*,

..... [1]

- (ii) the effect of the value of the capacitance of the smoothing capacitor in relation to smoothing.

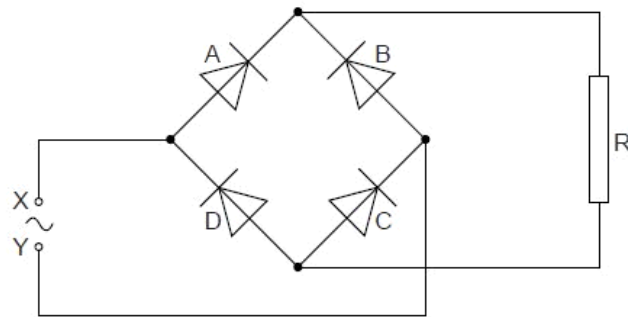
.....

.....

..... [2]

### Q18.

- 6 A bridge rectifier consists of four ideal diodes A, B, C and D, connected as shown in Fig. 6.1.



**Fig. 6.1**

An alternating supply is applied between the terminals X and Y.

- (a) (i) On Fig. 6.1, label the positive (+) connection to the load resistor R. [1]

- (ii) State which diodes are conducting when terminal Y of the supply is positive.

diode ..... and diode ..... [1]

For  
Examin  
Use

- (b) The variation with time  $t$  of the potential difference  $V$  across the load resistor  $R$  is shown in Fig. 6.2.

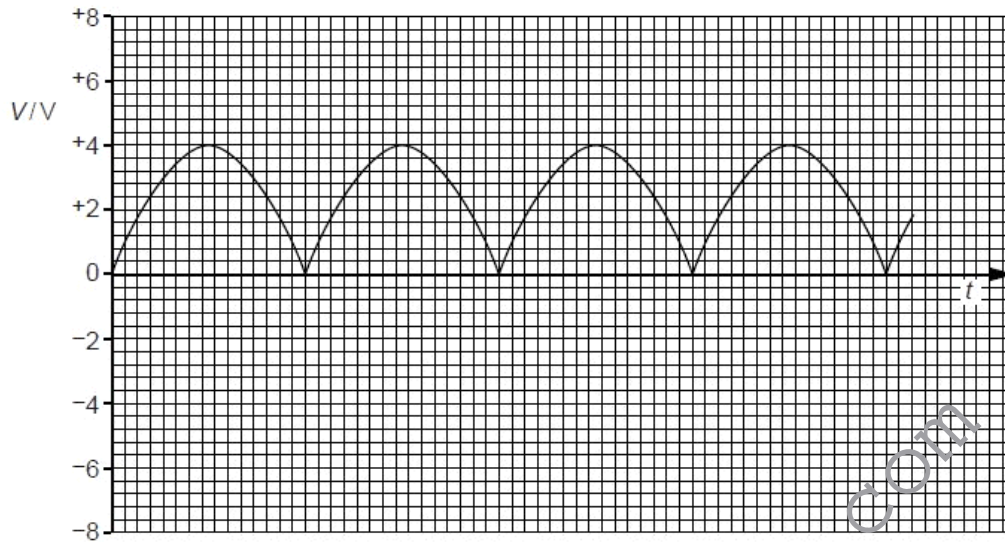


Fig. 6.2

The load resistor  $R$  has resistance  $2700\ \Omega$ .

- (i) Use Fig. 6.2 to determine the mean power dissipated in the resistor  $R$ .

power = ..... W [3]

- (ii) On Fig. 6.1, draw the symbol for a capacitor, connected so as to increase the mean power dissipated in the resistor  $R$ . [1]

- (c) The capacitor in (b)(ii) is now removed from the circuit.  
The diode  $A$  in Fig. 6.1 stops functioning, so that it now has infinite resistance.

On Fig. 6.2, draw the variation with time  $t$  of the new potential difference across the resistor  $R$ . [2]

Q19.



- 7 (a) The mean value of an alternating current is zero.

Explain

- (i) why an alternating current gives rise to a heating effect in a resistor,

.....  
.....  
..... [2]

- (ii) by reference to heating effect, what is meant by the root-mean-square (r.m.s.) value of an alternating current.

.....  
.....  
.....  
..... [2]

- (b) A simple iron-cored transformer is illustrated in Fig. 7.1.

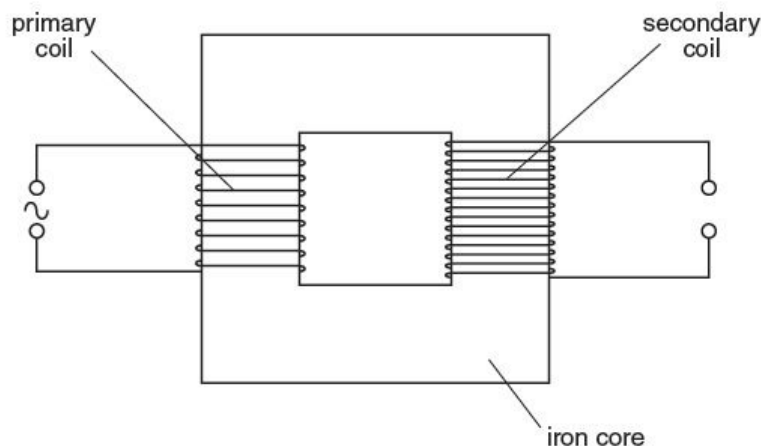


Fig. 7.1

- (i) State Faraday's law of electromagnetic induction.

.....  
.....  
..... [2]



- (ii) Use Faraday's law to explain why the current in the primary coil is not in phase with the e.m.f. induced in the secondary coil.

.....

.....

.....

.....

..... [3]

[www.megalecture.com](http://www.megalecture.com)





[www.megalecture.com](http://www.megalecture.com)